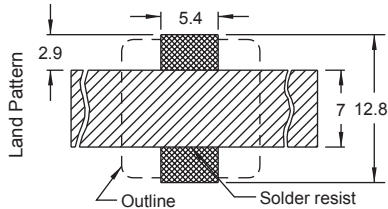
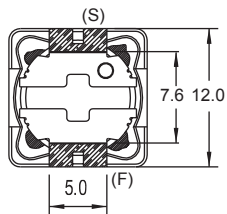
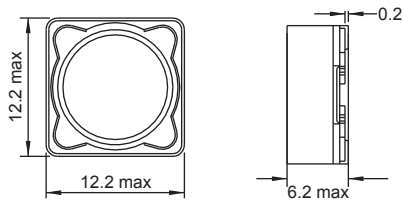
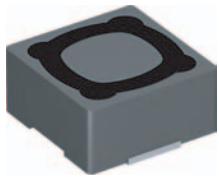
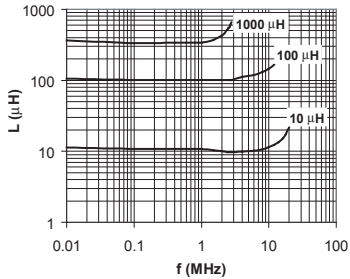


PIS 4720

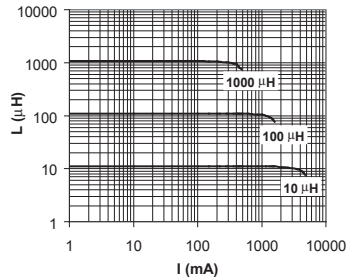


* In order to prevent short circuit, a solder resist is recommended

Typical L vs Frequency(f)



Typical L vs Current



Part No	Inductance L (µH)	f _L (kHz)	Tol ± (%)	DCR max (mΩ)	Rated DC Current I _{sat} (A)
PIS4720-1R3N-04	1.3	7960	30	12	8
PIS4720-2R1N-04	2.1	7960	30	14	7
PIS4720-3R1N-04	3.1	7960	30	17	5
PIS4720-4R4N-04	4.4	7960	30	20	5
PIS4720-5R8N-04	5.8	7960	30	21	4.4
PIS4720-7R5N-04	7.5	7960	30	24	4.2
PIS4720-100M-04	10	1	20,30	25	4
PIS4720-120M-04	12	1	20,30	27	3.5
PIS4720-150M-04	15	1	20,30	30	3.3
PIS4720-180M-04	18	1	20,30	34	3
PIS4720-220M-04	22	1	20,30	36	2.8
PIS4720-270M-04	27	1	20,30	51	2.3
PIS4720-330M-04	33	1	20,30	57	2.1
PIS4720-390M-04	39	1	20,30	68	2
PIS4720-470M-04	47	1	20,30	75	1.8
PIS4720-560M-04	56	1	20,30	110	1.7
PIS4720-680M-04	68	1	20,30	120	1.5
PIS4720-820M-04	82	1	20,30	140	1.4
PIS4720-101M-04	100	1	20,30	160	1.3
PIS4720-121M-04	120	1	20,30	170	1.1
PIS4720-151M-04	150	1	20,30	230	1
PIS4720-181M-04	180	1	20,30	290	0.9
PIS4720-221M-04	220	1	20,30	400	0.8
PIS4720-271M-04	270	1	20,30	460	0.75
PIS4720-331M-04	330	1	20,30	510	0.68
PIS4720-391M-04	390	1	20,30	690	0.65
PIS4720-471M-04	470	1	20,30	770	0.58
PIS4720-561M-04	560	1	20,30	860	0.54
PIS4720-681M-04	680	1	20,30	1200	0.48
PIS4720-821M-04	820	1	20,30	1340	0.43
PIS4720-102M-04	1000	1	20,30	1530	0.4

Material : Ferrite
SPQ : Reel 500 [-04]

Remark : Isat - see description in Inductors Technical Data page 51

SMD Power Inductors & Shielded